



OYO CORPORATION, PACIFIC DOCTOR TO THE EARTH

OYO CORPORATION, PACIFIC

P.O. Box 11108, Tamuning, Guam 96931

Tumon Bay Business Center Unit 103, 919 San Vitores Rd., Tumon, Guam 96913 Tel:671-300-0622 Fax:671-300-0623

<http://www.oyopacific.com/>

Addressing the need for a less intrusive geophysical exploration and initiating the steps toward taking care of our irreplaceable Earth through the use of the UtilityScan DF.

UtilityScan DF Features

The UtilityScan DF is ideal for locating the position and depth of metallic and non-metallic objects, including service utilities such as gas, communications, sewer lines as well as underground storage tanks and PVC pipes in various soils. The UtilityScan DF is purpose-built and offers an easy-to-use touchscreen interface to view shallow and deep targets simultaneously in a single scan.

The new dual-frequency 300 MHz and 800 MHz antenna is GSSI's first digital antenna, allowing the operator to locate targets at depths of up to 5 m/16 ft. (in U.S./Canada). With an operation life of up to eight hours and survey speed up to 10 km/h (6.25 mph), data collection is fast and efficient.

Advanced software features offer the user several options to view the data; each channel individually, both channels separated via split screen, or our patent-pending Blend mode. The UtilityScan DF also provides advanced signal processing tools such as stacking, signal floor tracking and background removal.



Compact Survey Cart Model 655

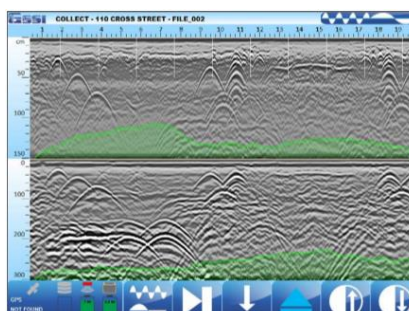
- 1 Touch-screen control unit
- 2 Interior, dual-frequency antenna
- 3 Adjustable, protective capsule
- 4 Ergonomic handle and flexible mount
- 5 Rugged, removable wheels
- 6 Internal, integrated survey wheel encoder

System Includes

- Dual-frequency antenna (300 and 800 MHz)
- Customized Panasonic Toughpad FZ-G1 control unit with extended life battery and AC power supply
- Choice of survey cart with encoder wheel
- 2 m control cable
- Transit case for control unit
- Two batteries and two-bay battery charger: antenna
- User Manual
- 2-year warranty

Split Mode

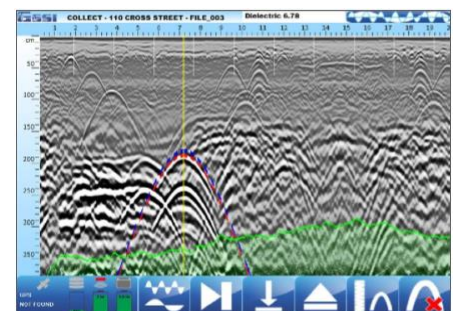
The UtilityScan DF has several modes to view the data. Split mode allows the user to view the two channels simultaneously, exclusive from one another in the same view.



Data illustrates several metallic and non-metallic targets at various depths in Split mode. Green shaded area represents estimated signal floor.

Blend Mode

The UtilityScan DF features a patent-pending method to view the data, called Blend mode. Blend mode combines the high resolution near-surface data with lower depth detail in a single view.



Data illustrates several metallic and non-metallic targets at various depths in Blend mode. Green shaded area represents estimated signal floor. Red/blue dotted line identifies the soil velocity calculation tool.