



OYO CORPORATION, PACIFIC DOCTOR TO THE EARTH

OYO CORPORATION, PACIFIC

P.O. Box 11108, Tamuning, Guam 96931

Tumon Bay Business Center Unit 103, 919 San Vitores Rd., Tumon, Guam 96913 Tel:671-300-0622 Fax:671-300-0623

<http://www.oyopacific.com/>

Addressing the need for a less intrusive geophysical exploration and initiating the steps toward taking care of our irreplaceable Earth through the use of the StructureScan Mini.

StructureScan Mini

Front/Top View

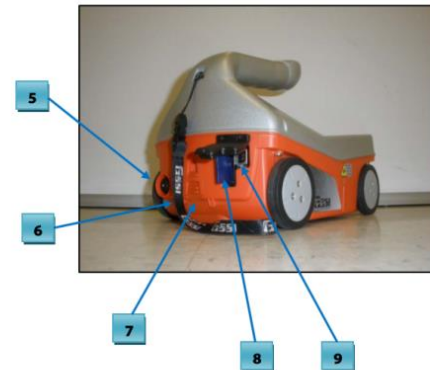


- 1 Ergonomic handle and controls
- 2 Easy to use operator interface with color display screen
- 3 Survey wheel encoder
- 4 Guiding laser for locating

Typical Uses

- Concrete inspection – locate metallic and non-metallic targets in walls, floors and ceilings
- Structure inspection – bridges, monuments, walls, towers, tunnels, balconies, garages, decks
- Condition assessment – map relative concrete condition for rehab planning
- Measure slab thickness
- Void location

Back View

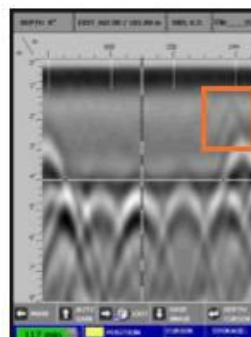


- 5 Power Button
- 6 Wrist strap
- 7 Battery
- 8 SDR Card/Slot
- 9 USB-B Port

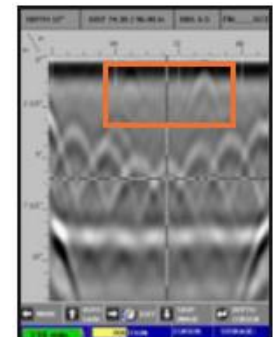
System Specifications

Center Frequency	1600 MHz
Depth Range	Up to 20 inches (50 cm)
Unit Weight (with battery)	3.3 pounds (1.6 kg)
Dimensions	6 (w) x 7 (h) x 9 (l) in. (15.24 x 17.78 x 22.86 cm)
Languages	English, Spanish, French
Environmental	IP-65

1600 MHz



Data showing a small 5/8" plastic conduit (less visible) over rebar mat.



Small 1/2" conduits (less visible) very close to surface. Note strong horizontal reflection, representing bottom of slab.